



30435

6418366



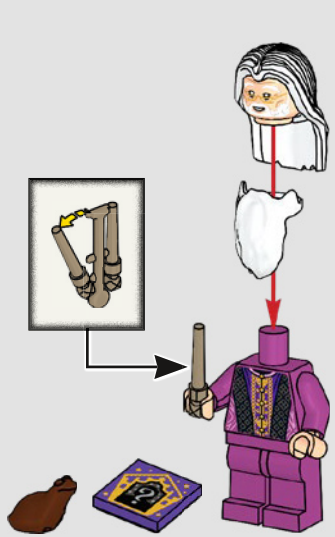
[LEGO.com/harrypotter](https://www.lego.com/harrypotter)

[LEGO.com/service](https://www.lego.com/service)

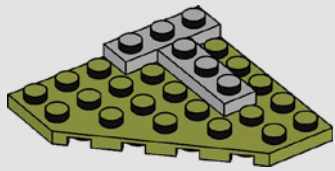
LEGO and the LEGO logo are trademarks of the LEGO Group.  
©2022 The LEGO Group. 6418366



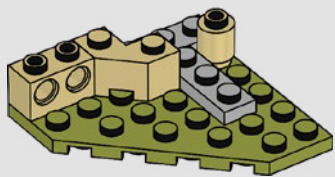
WIZARDING WORLD characters, names and related indicia are © & ™ Warner Bros. Entertainment Inc. WB SHIELD: © & ™ WBIE. Publishing Rights © JKR. (s22)



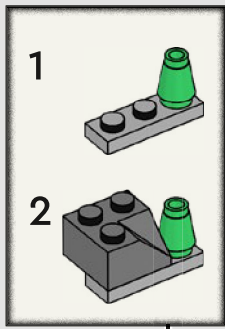
1



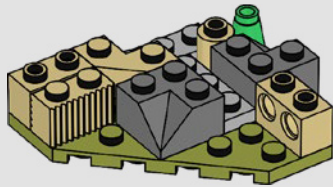
2



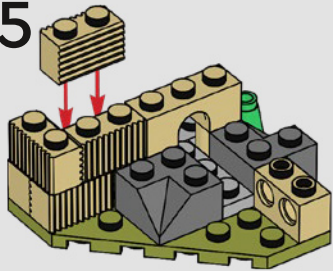
3



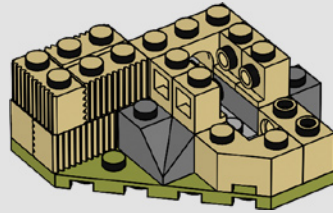
4



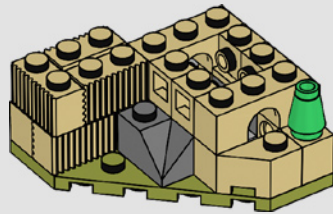
5



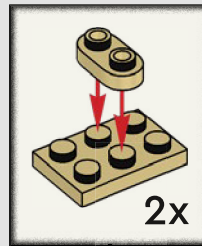
6



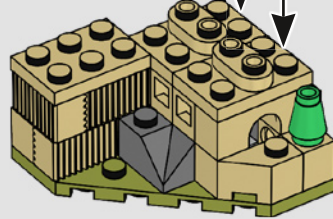
7



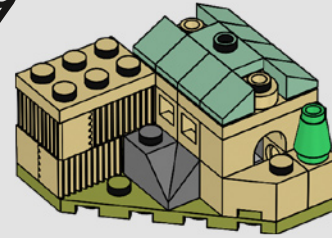
8



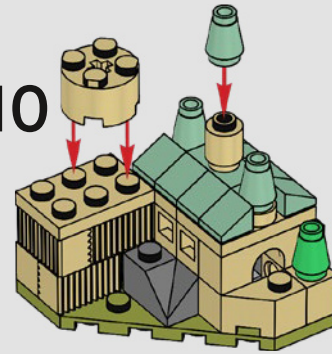
8



9

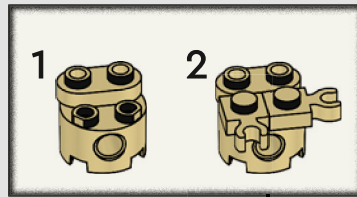


10

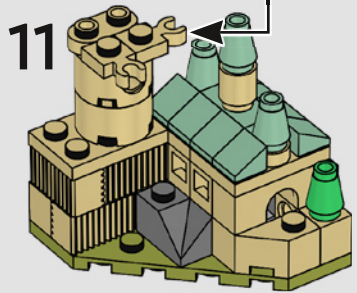


1

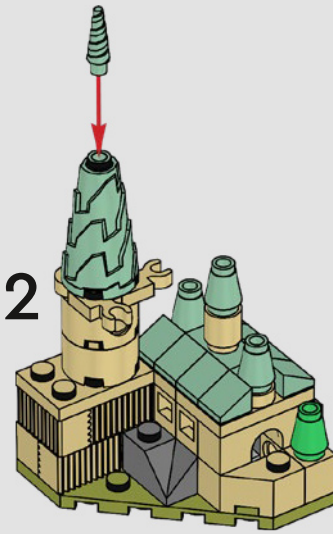
2



11



12



13

